

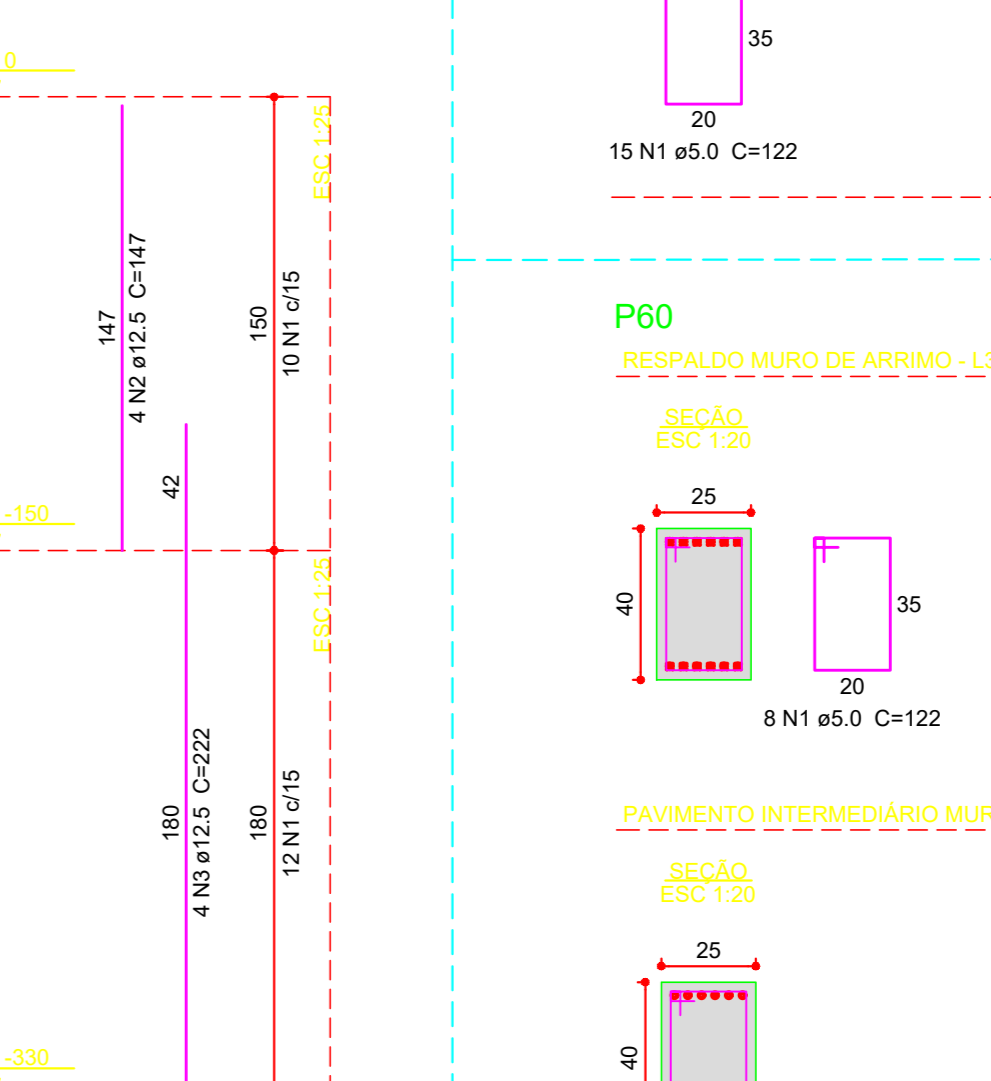
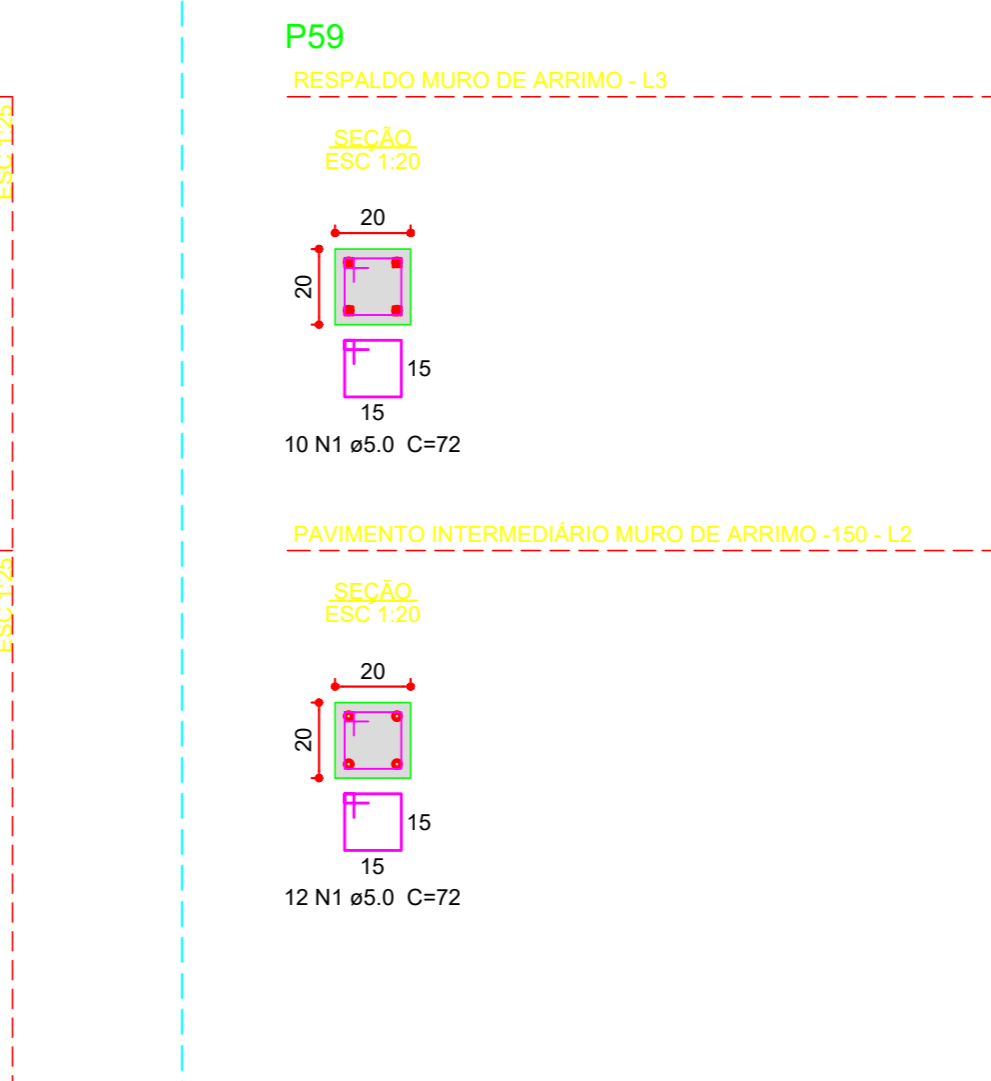
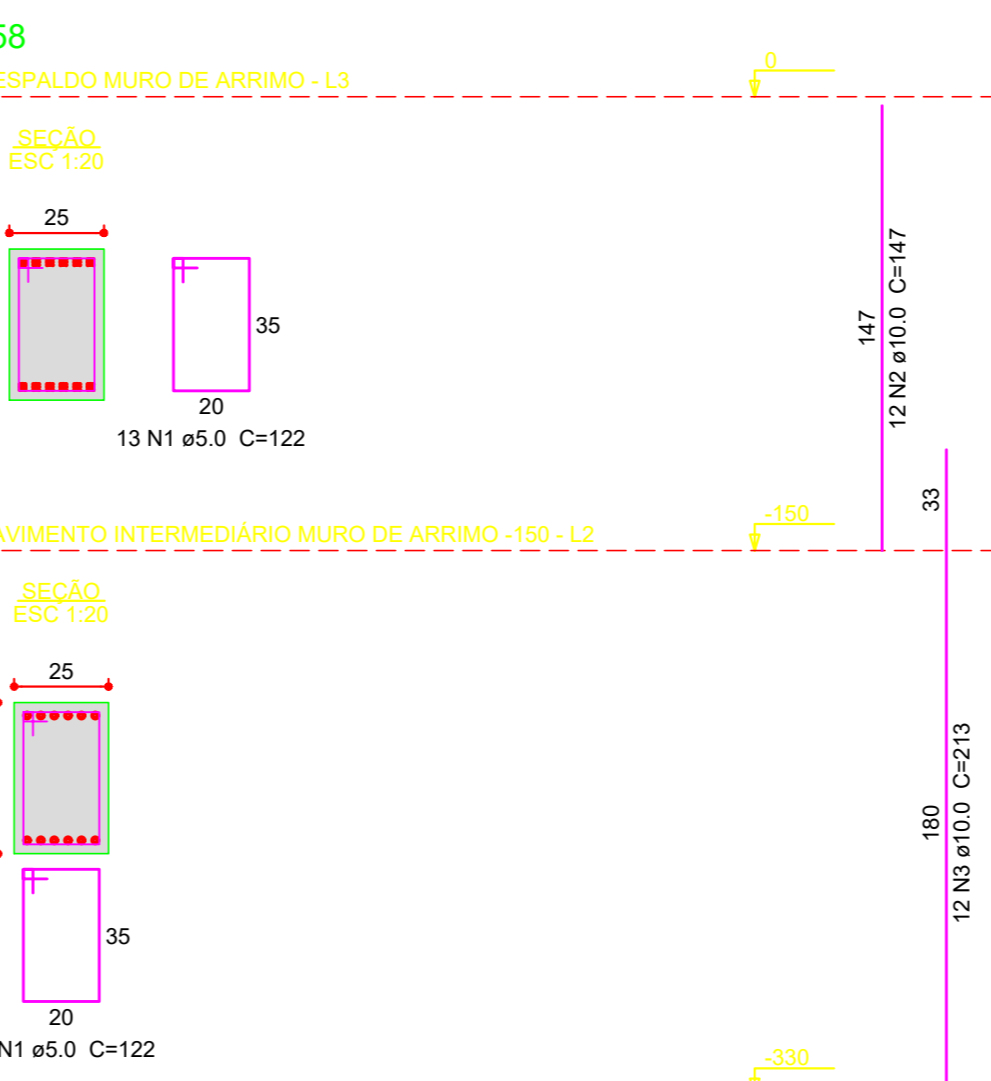
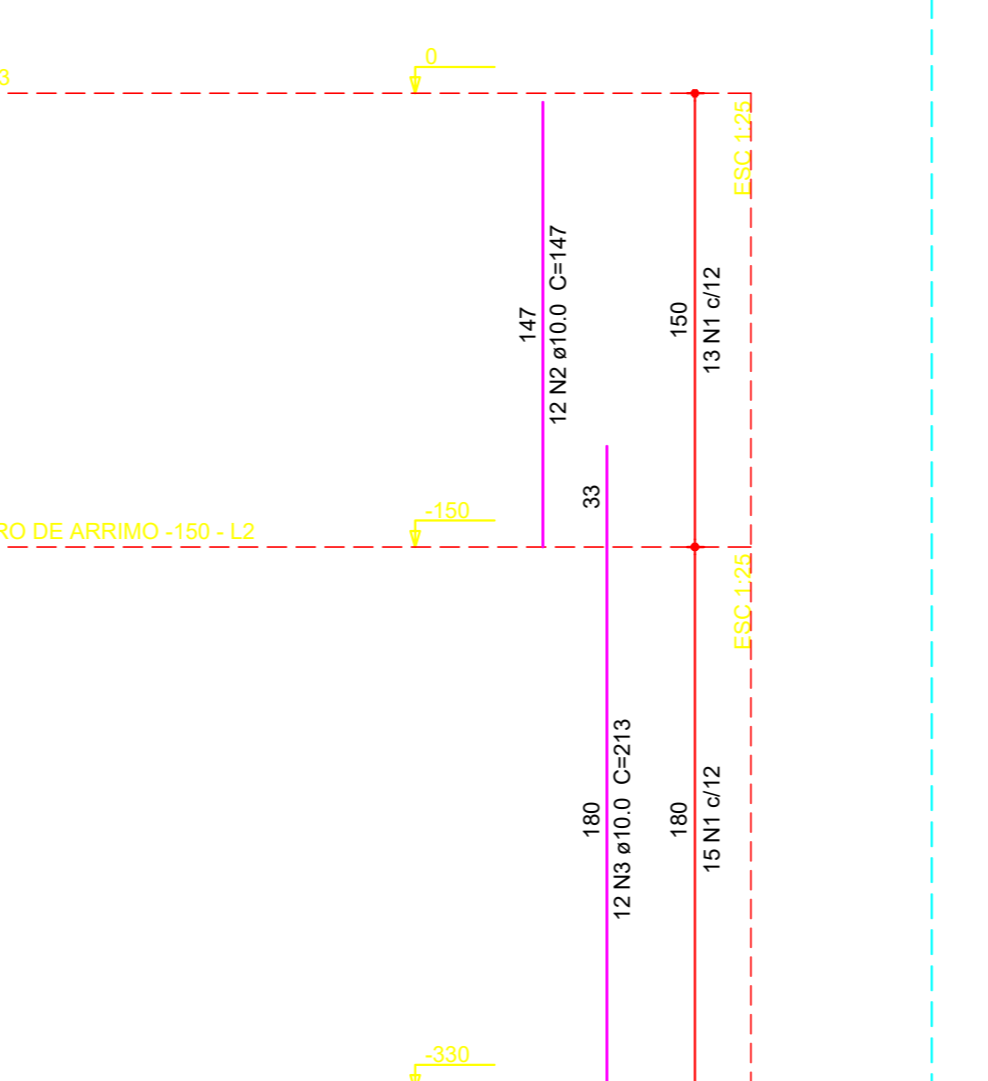
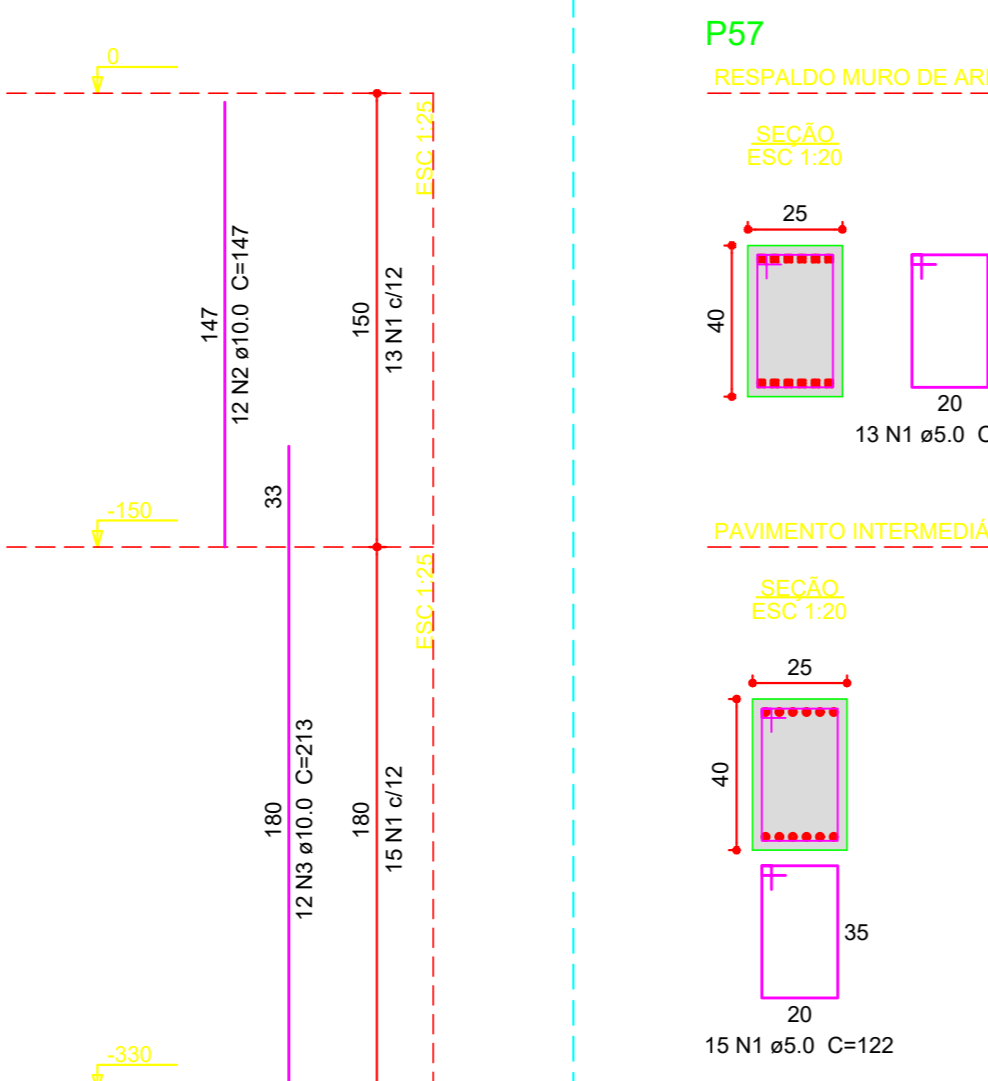
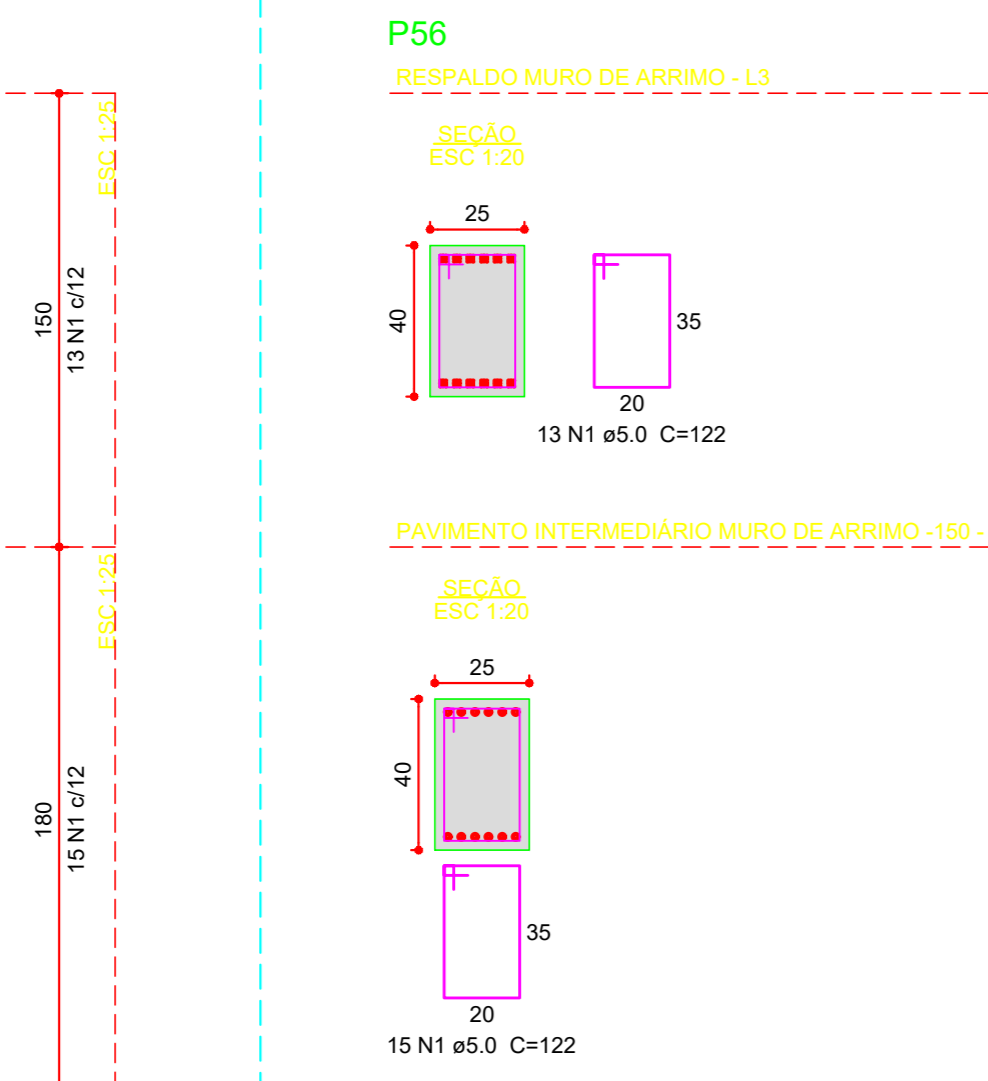
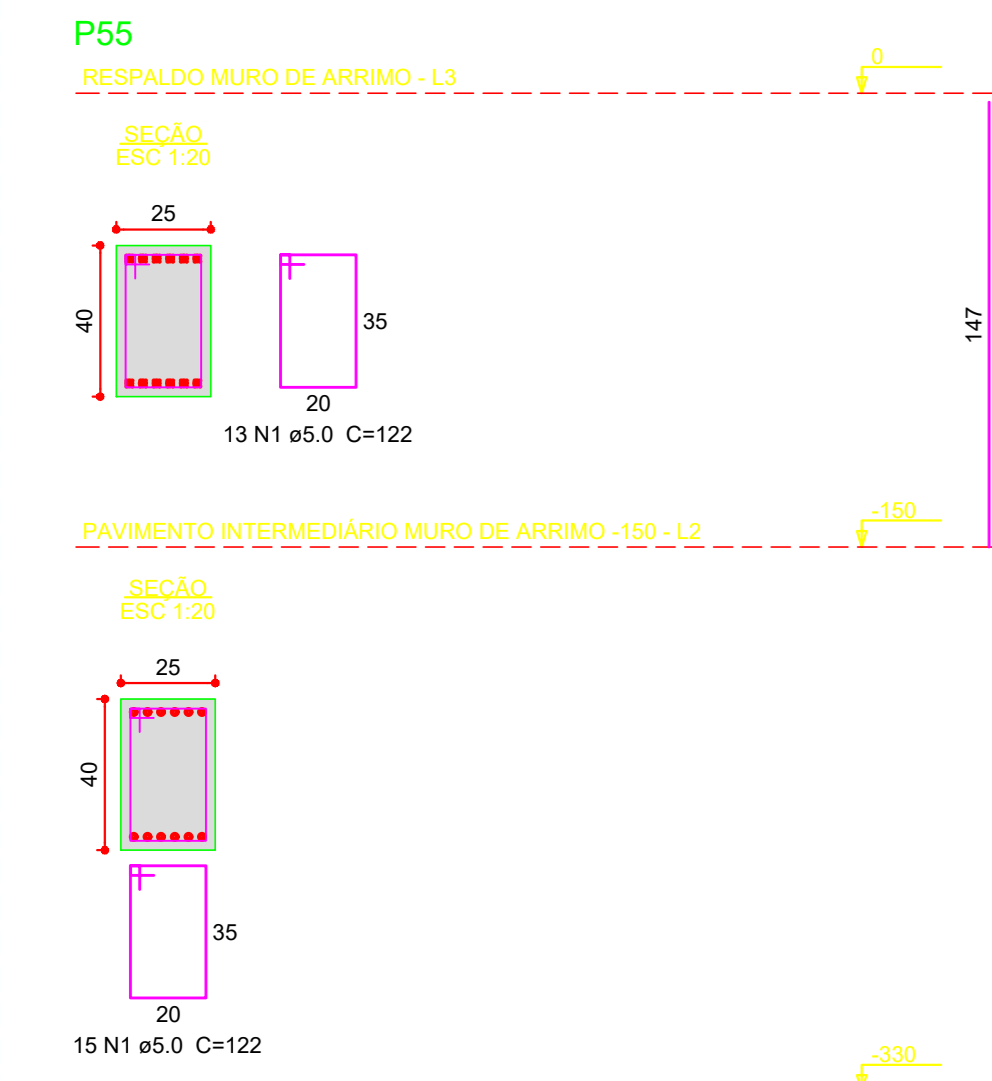
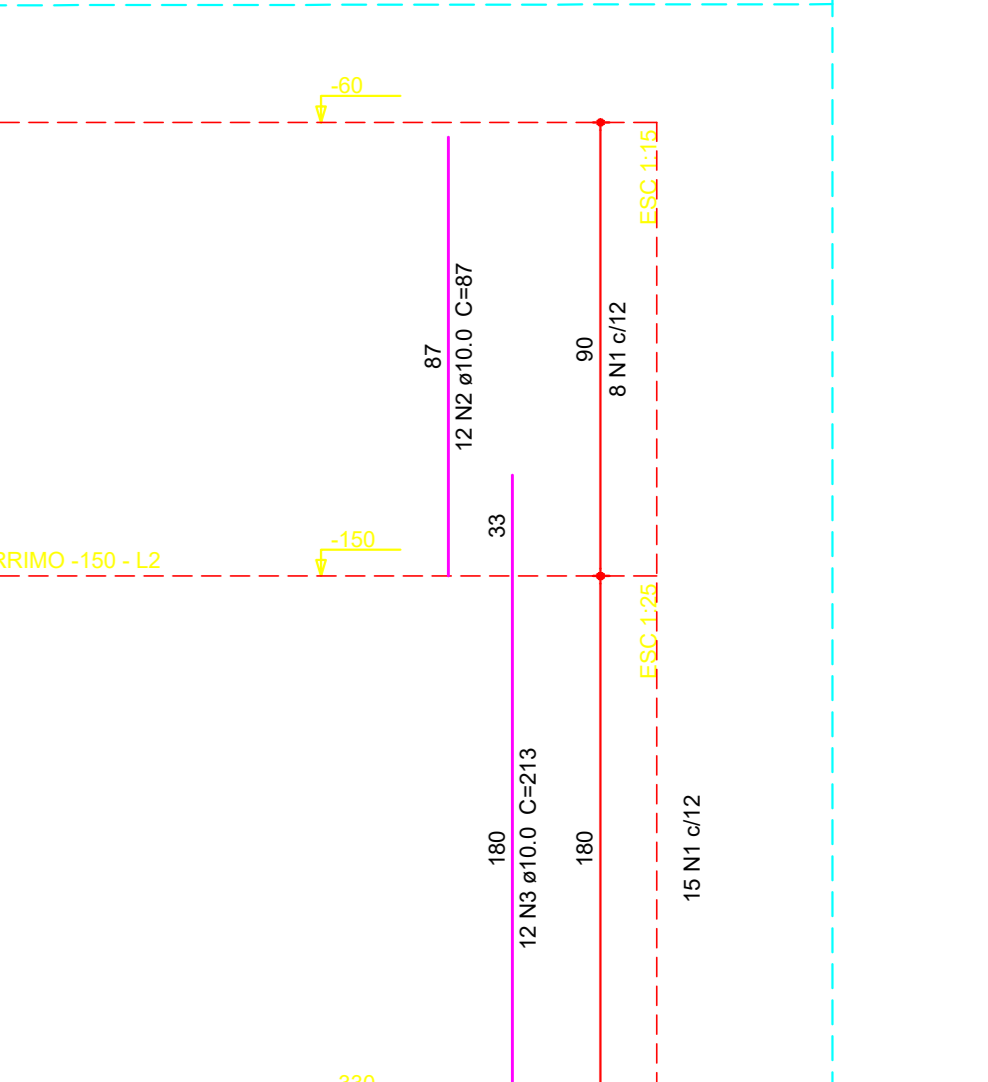
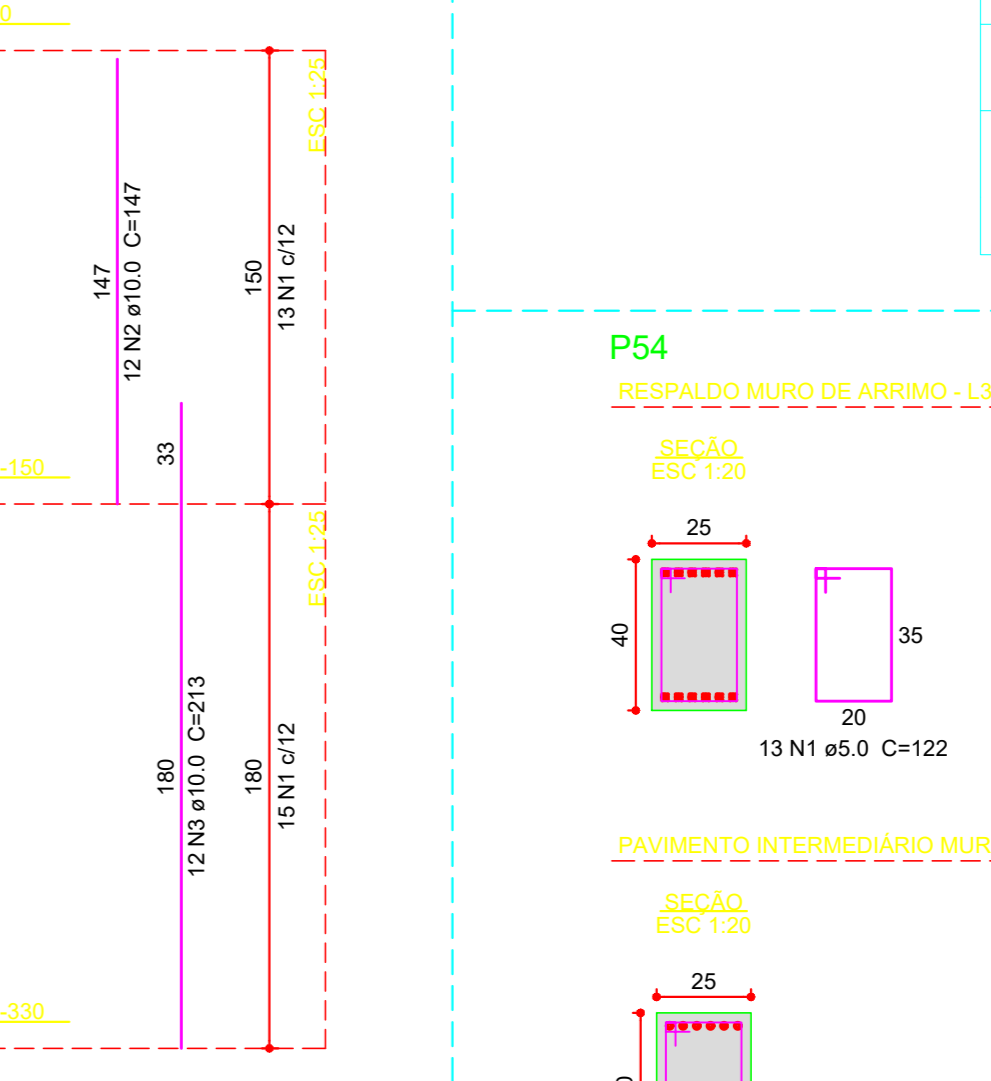
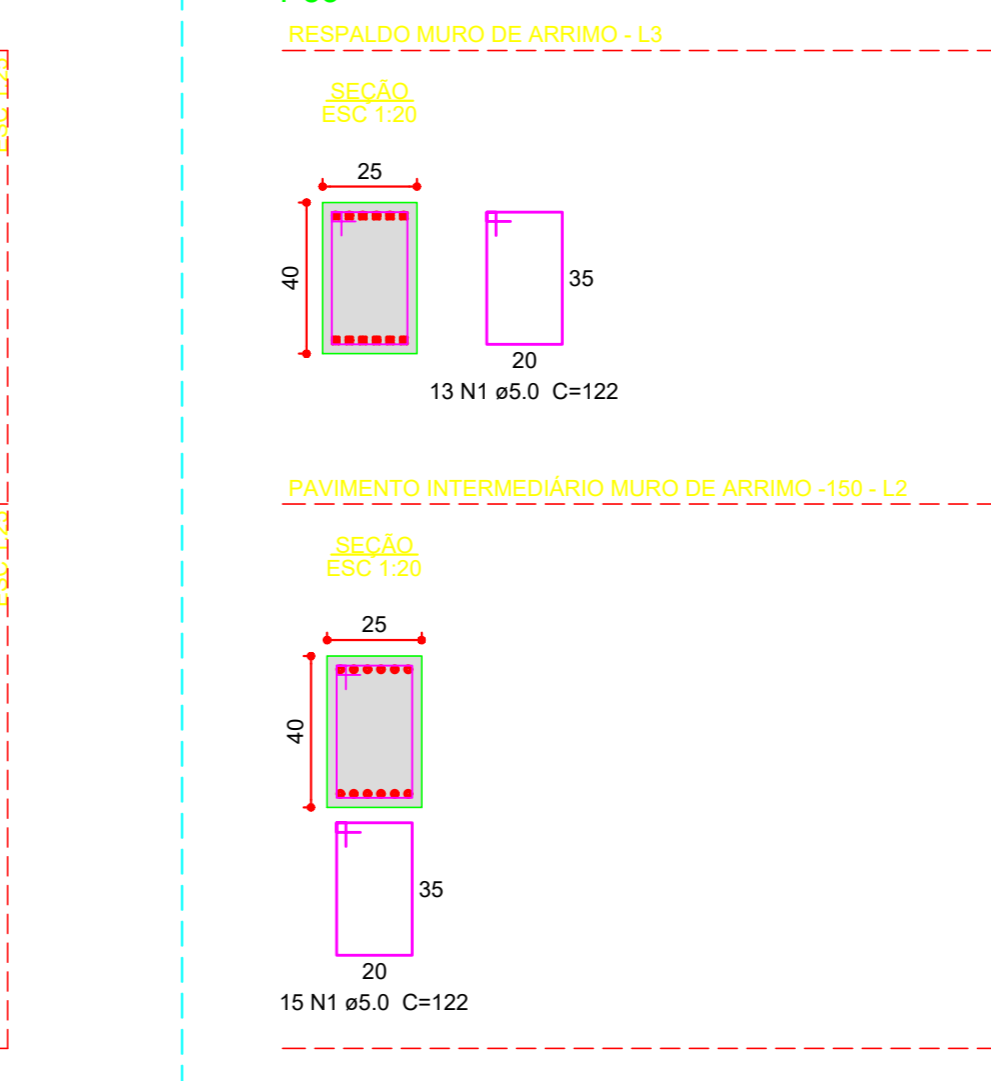
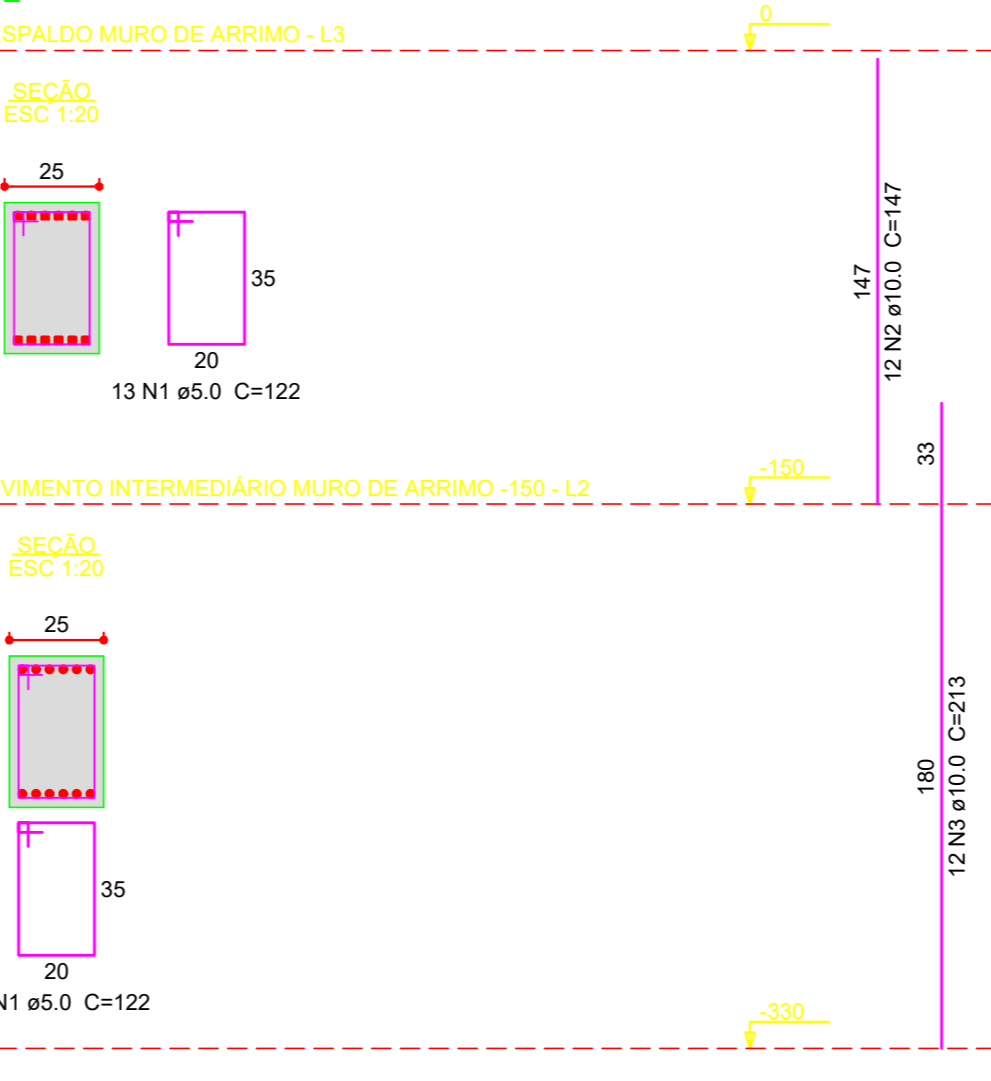
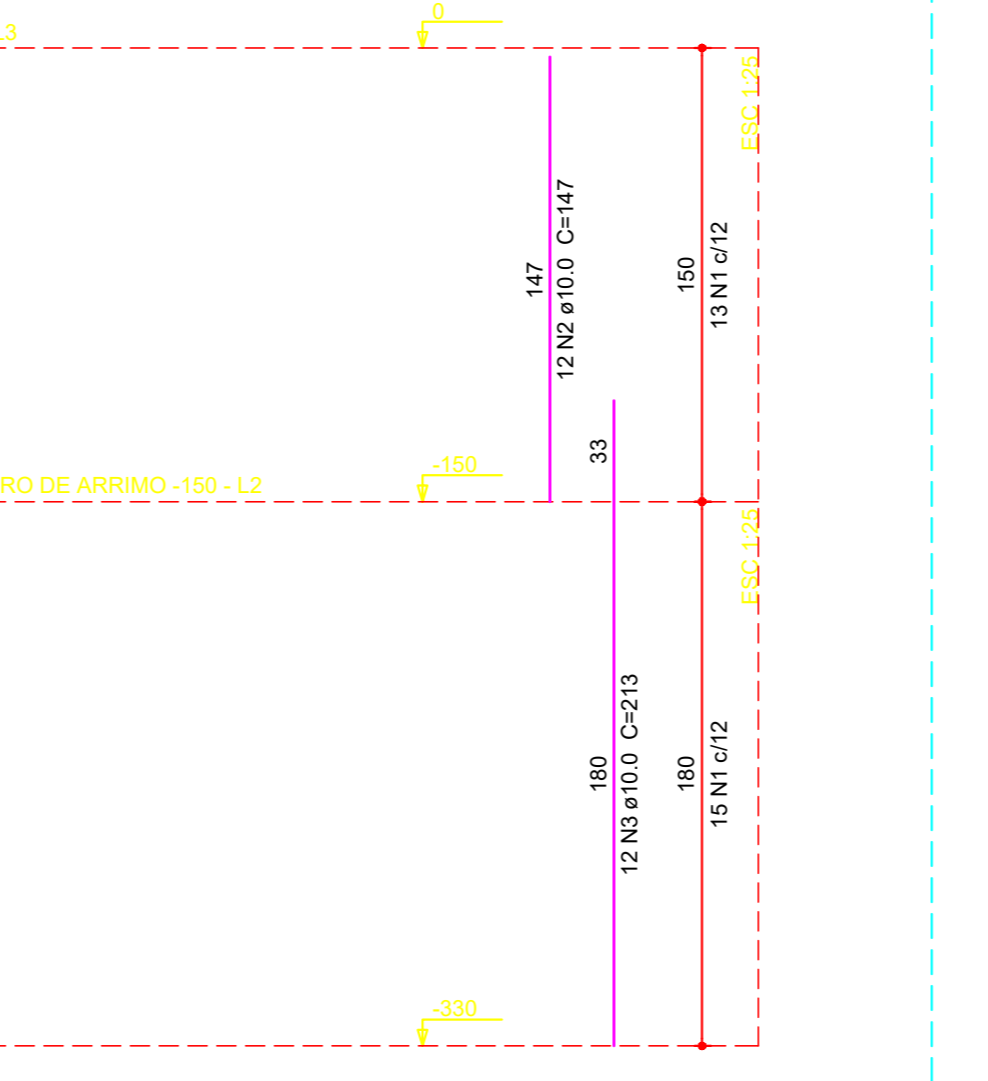
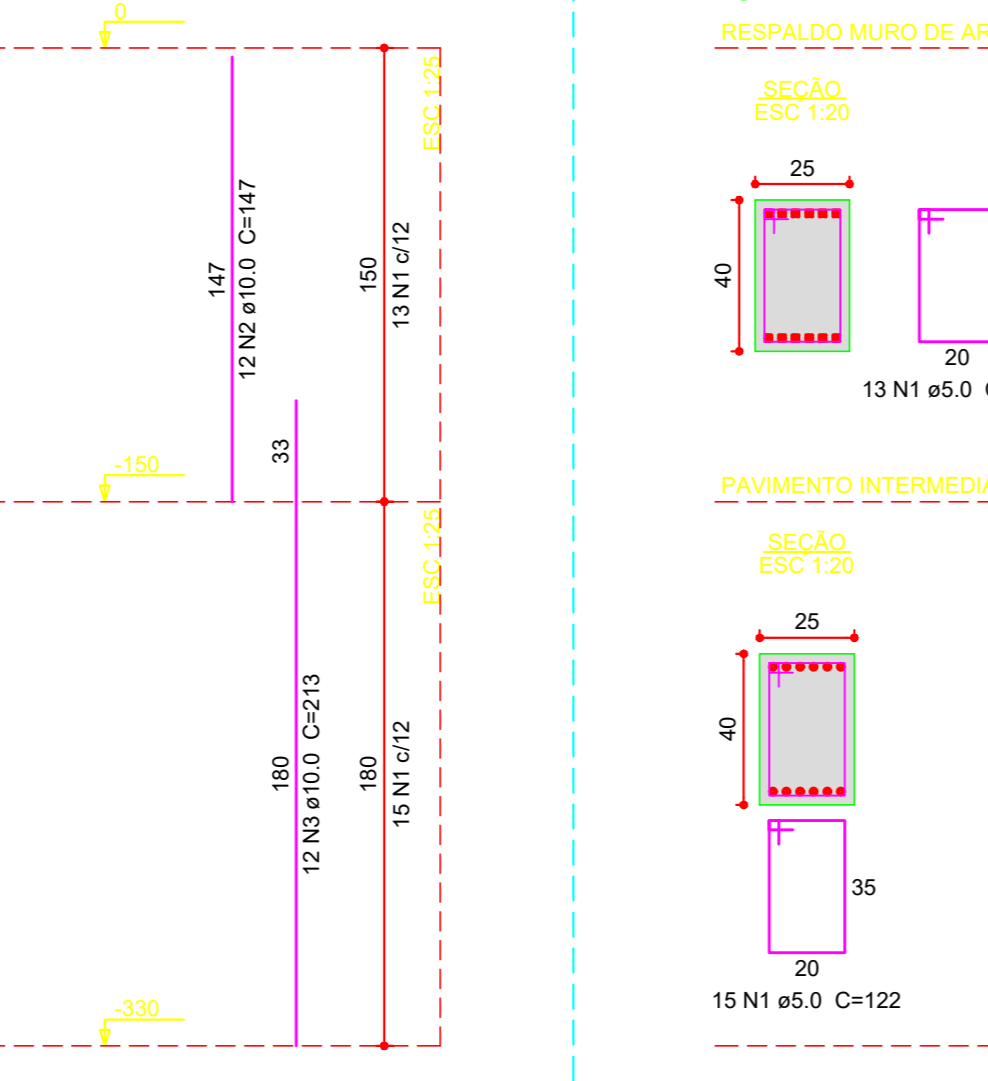
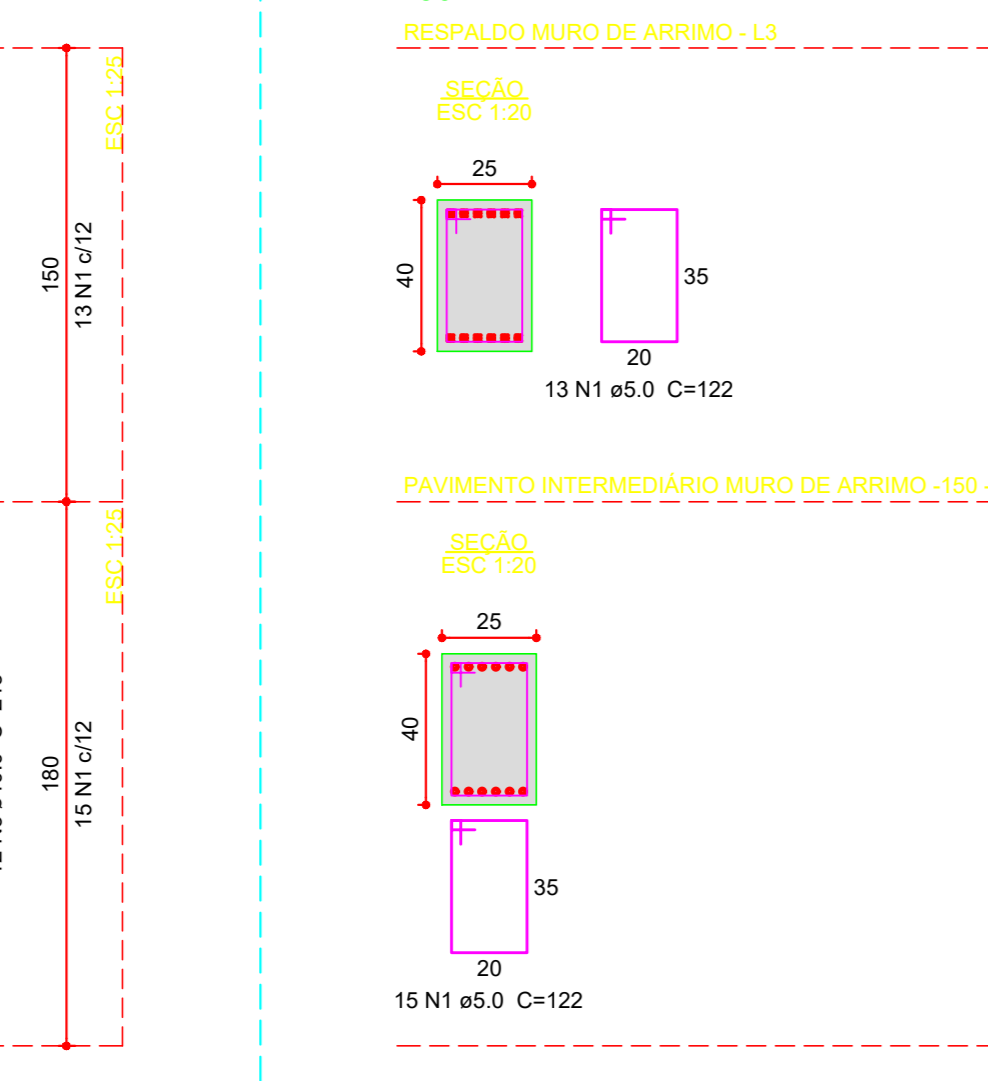
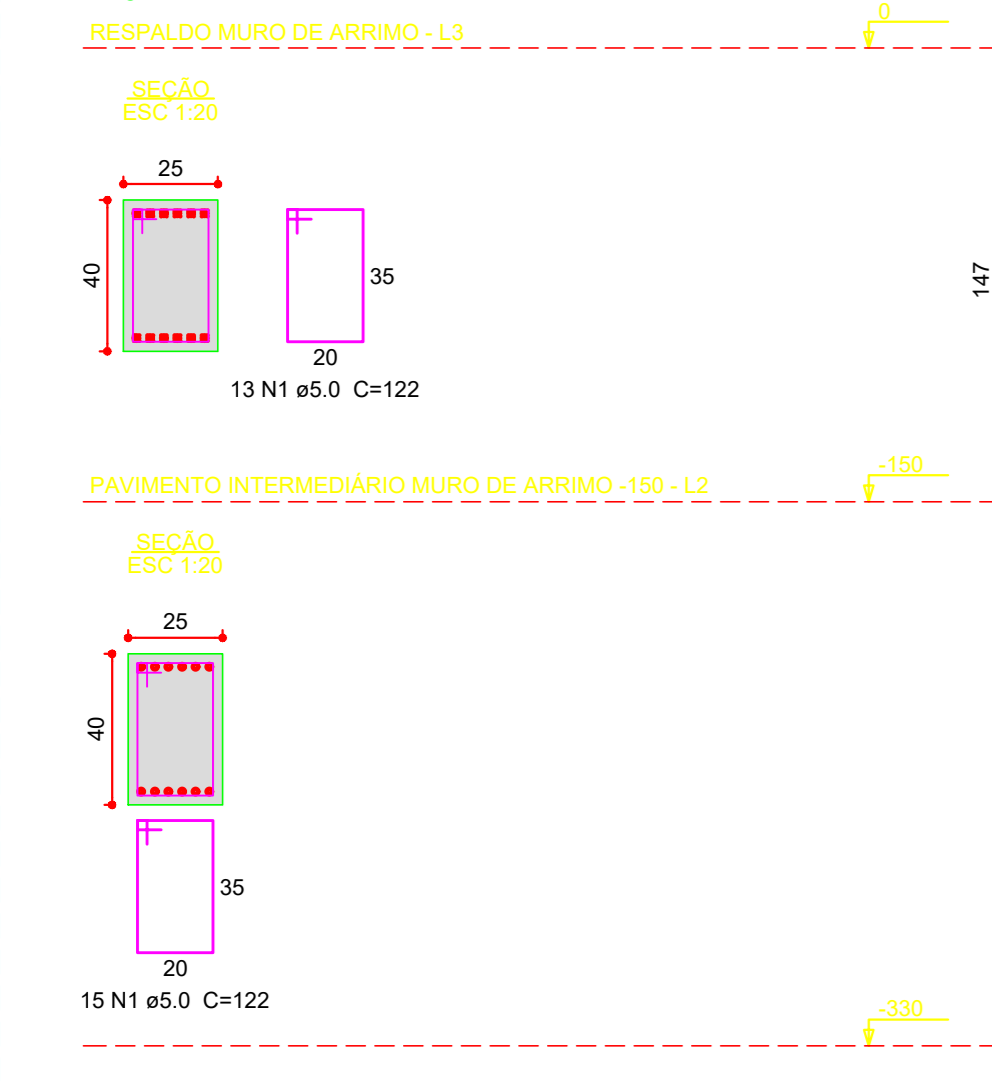
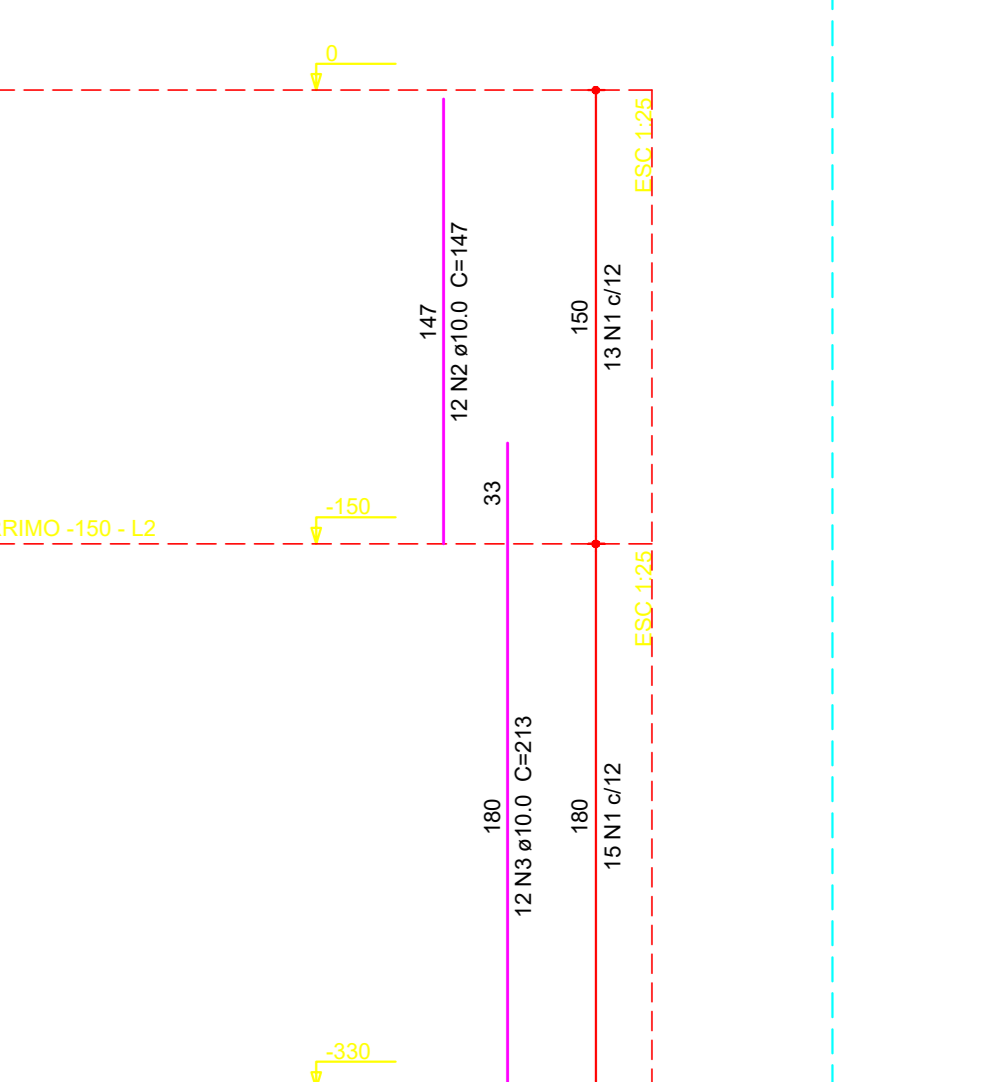
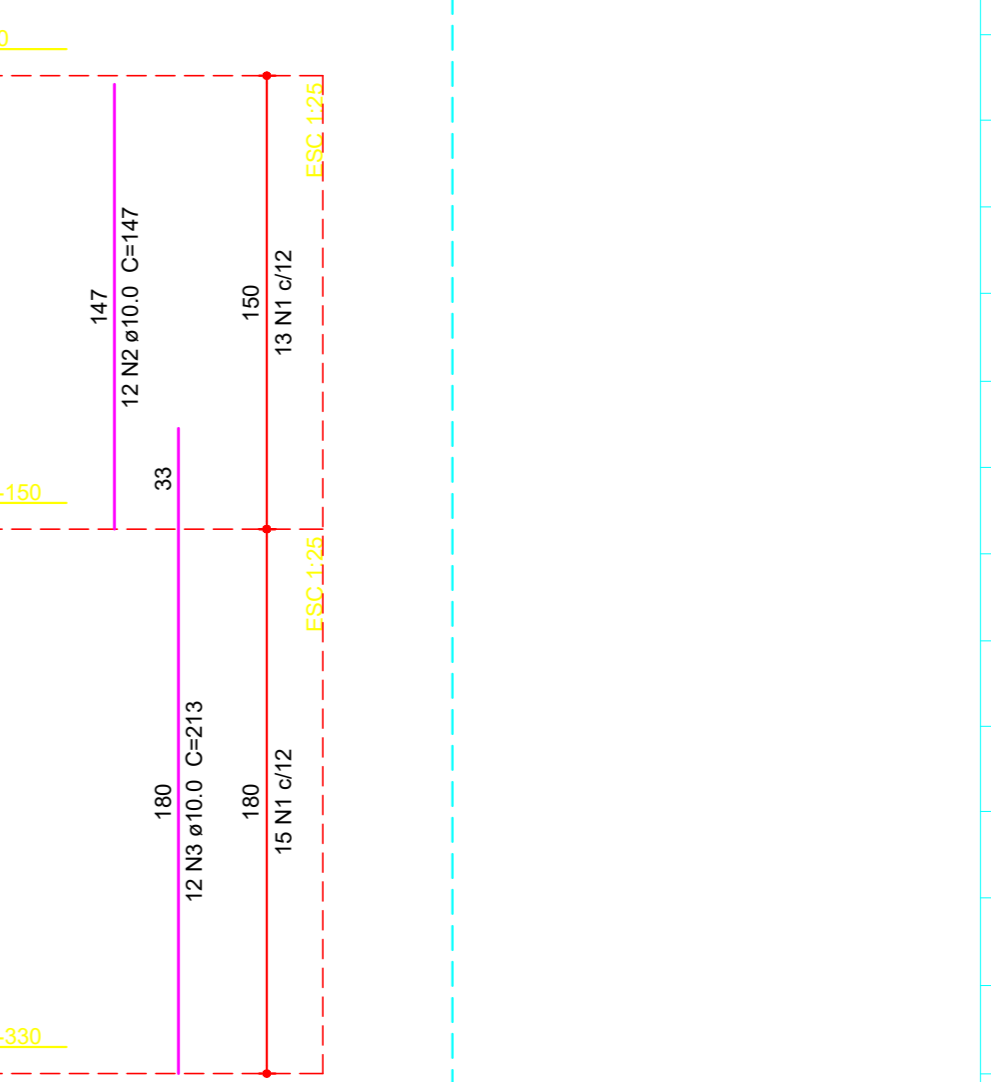
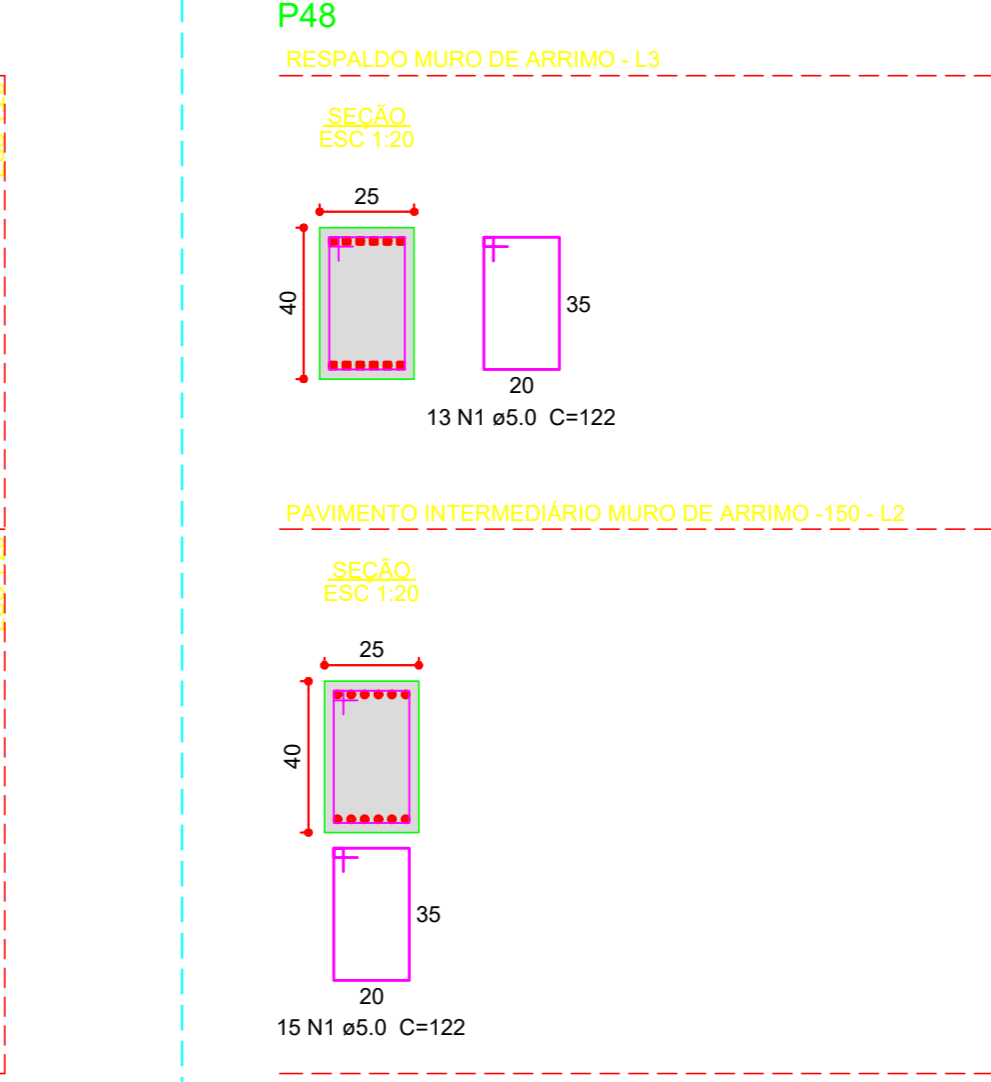
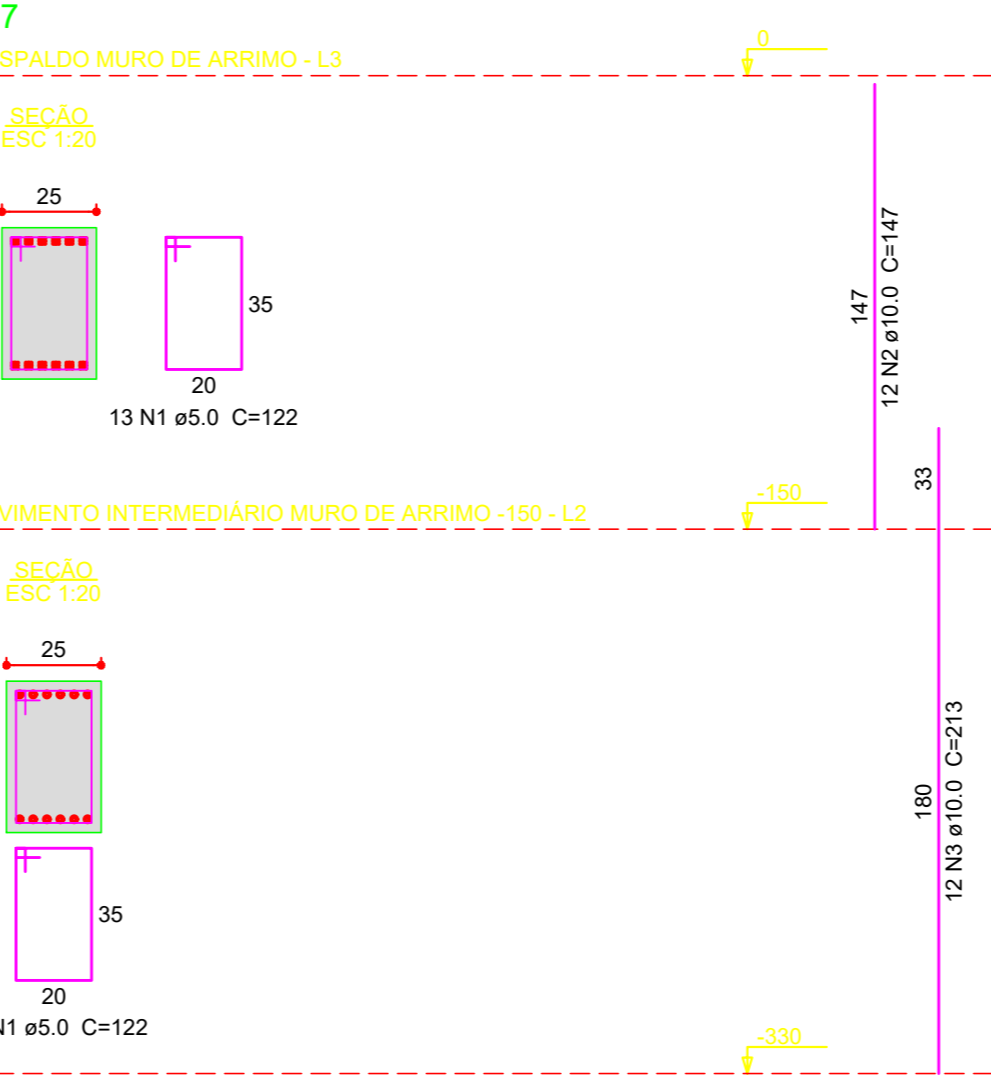
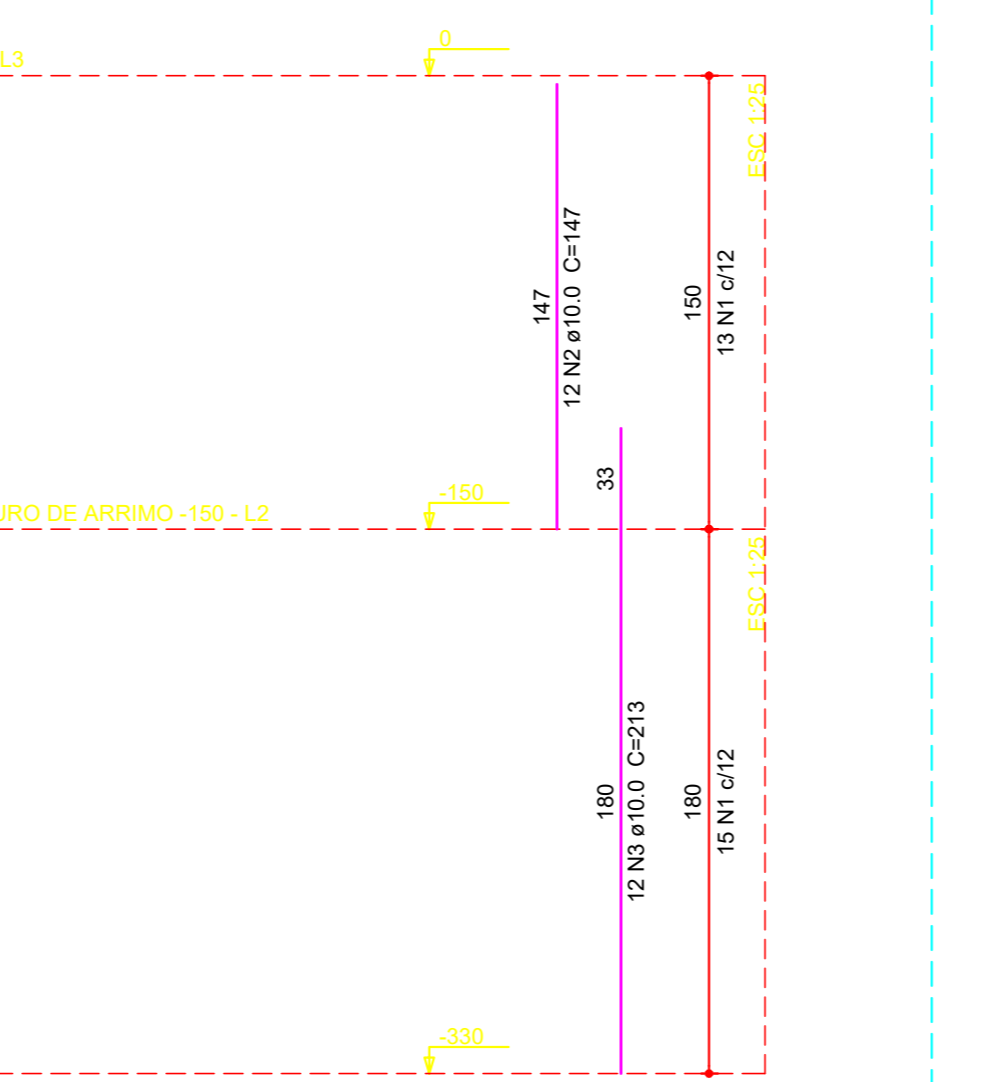
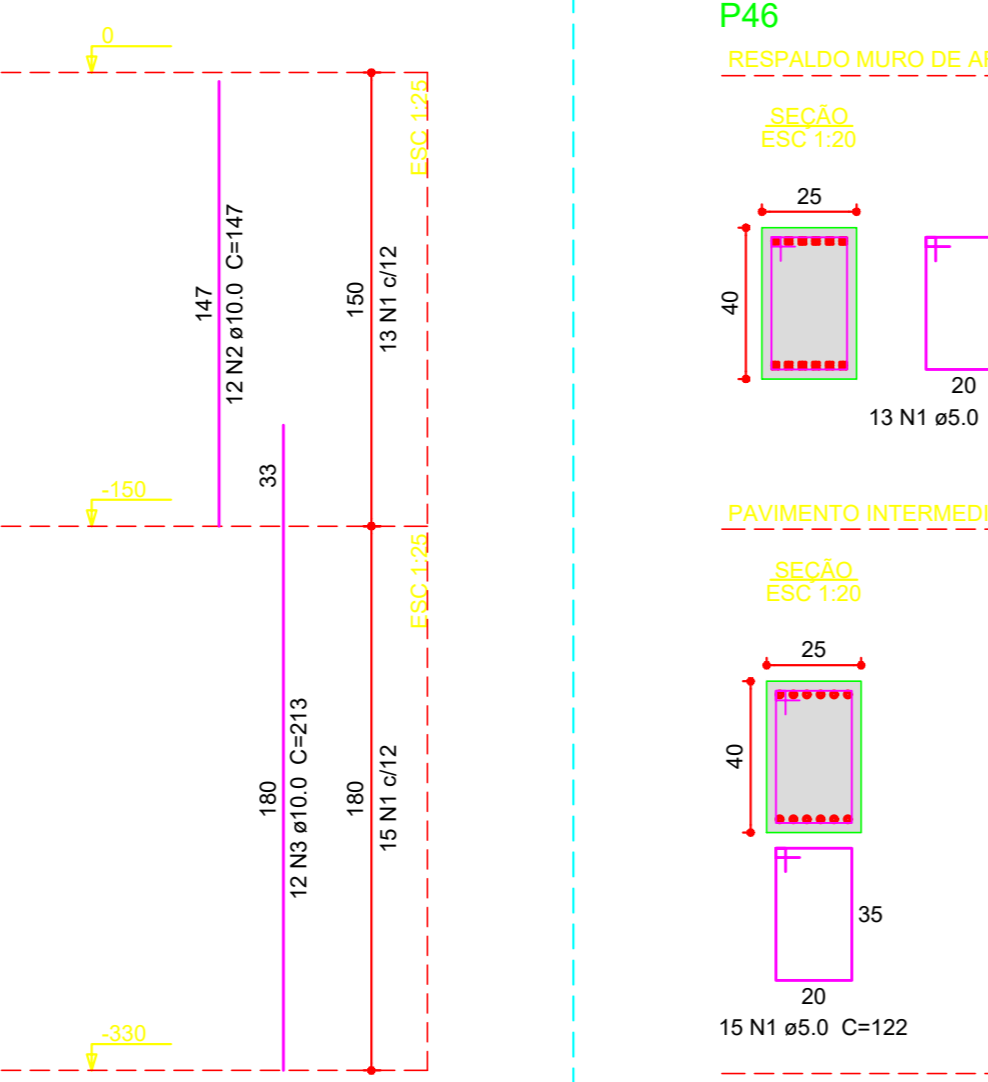
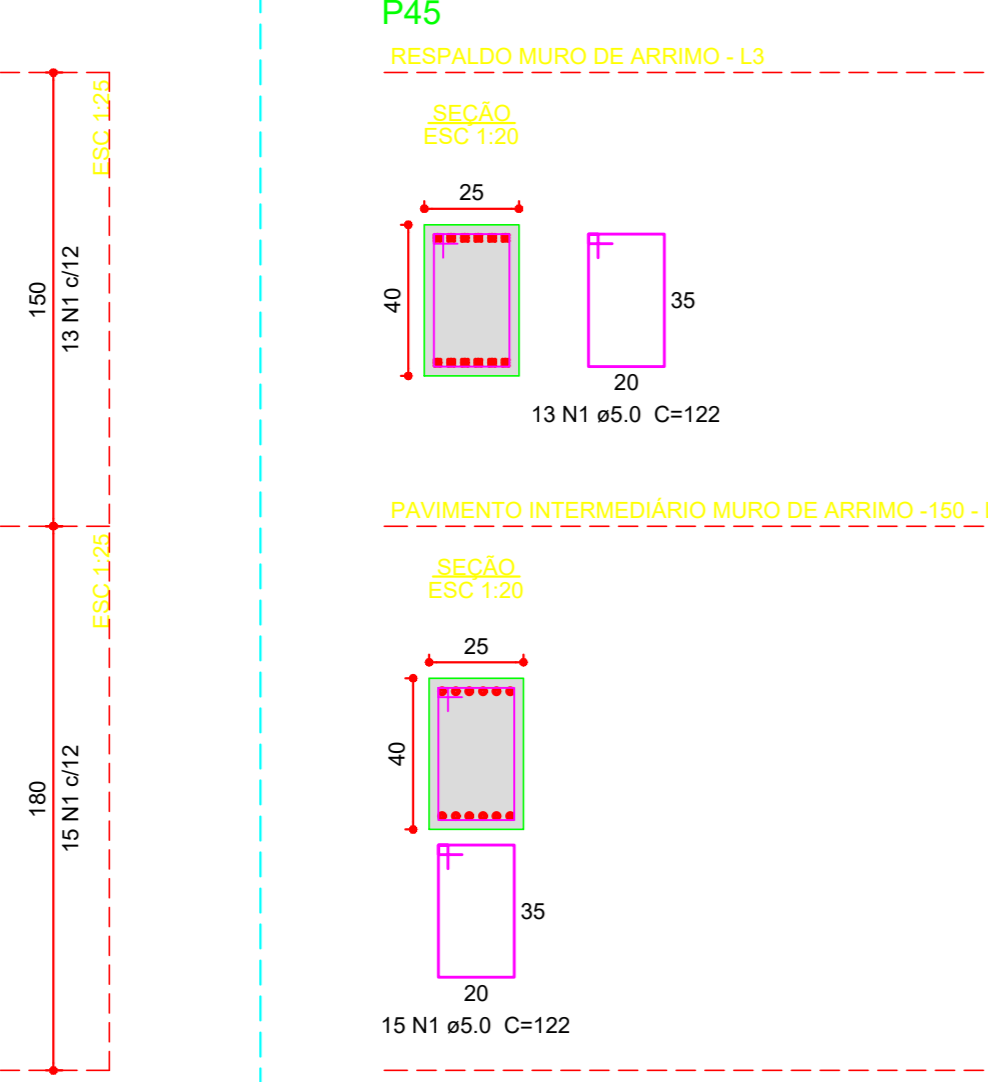
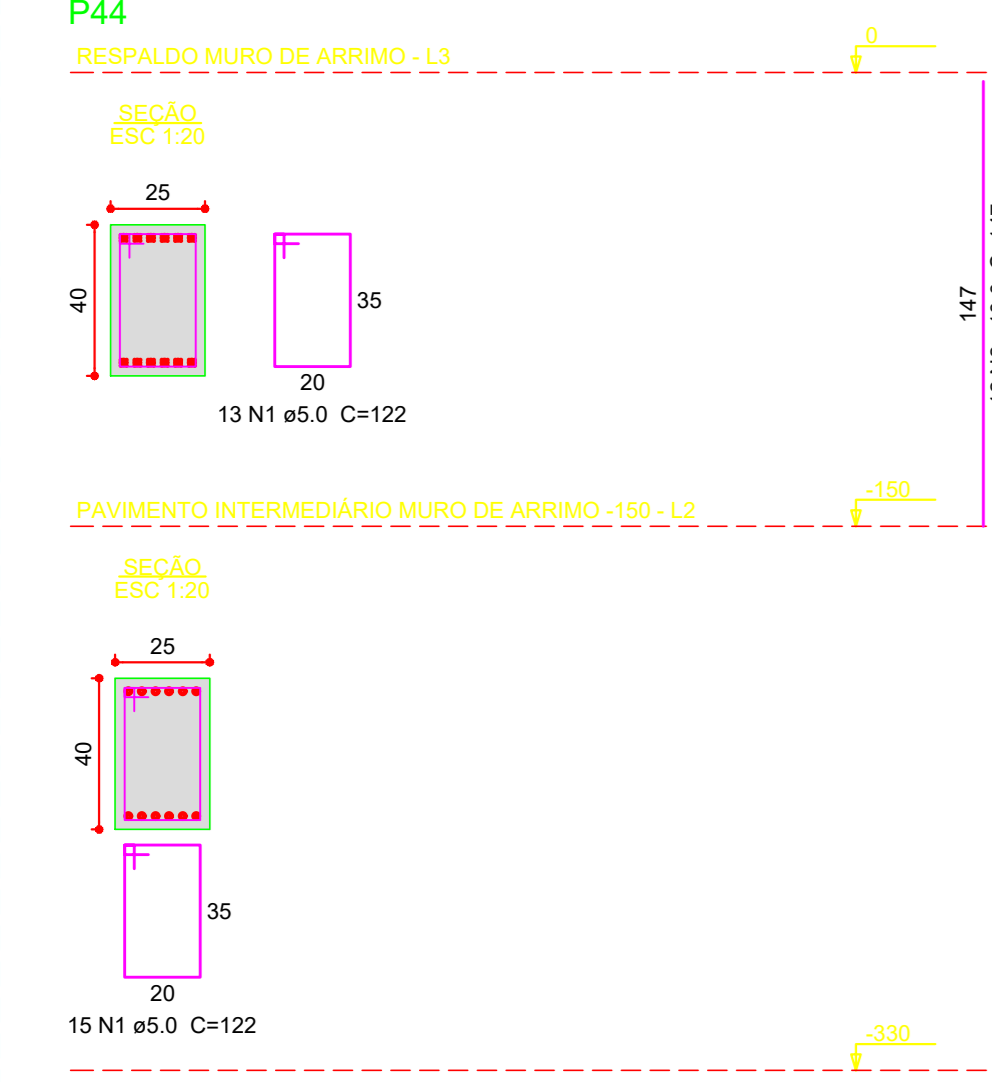
Relação do aço

ELEMENTO	AÇO	N	DIAM (mm)	QUANT	C.UNIT (cm)	C.TOTAL (cm)
P38	CABO	1	5,0	18	122	2106
		2	10,0	12	207	2484
P39	CABO	1	5,0	18	122	2106
		2	10,0	12	207	2484
P40	CABO	1	5,0	18	122	2106
		2	10,0	12	207	2484
P41	CABO	1	5,0	14	72	1008
		2	12,5	4	207	828
P42	CABO	1	5,0	28	122	3416
		2	10,0	12	147	1764
P43	CABO	1	5,0	28	122	3416
		2	10,0	12	147	1764
P44	CABO	1	5,0	28	122	3416
		2	10,0	12	147	1764
P45	CABO	1	5,0	28	122	3416
		2	10,0	12	147	1764
P46	CABO	1	5,0	28	122	3416
		2	10,0	12	147	1764
P47	CABO	1	5,0	28	122	3416
		2	10,0	12	147	1764
P48	CABO	1	5,0	28	122	3416
		2	10,0	12	147	1764
P49	CABO	1	5,0	28	122	3416
		2	10,0	12	147	1764
P50	CABO	1	5,0	28	122	3416
		2	10,0	12	147	1764
P51	CABO	1	5,0	28	122	3416
		2	10,0	12	147	1764
P52	CABO	1	5,0	28	122	3416
		2	10,0	12	147	1764
P53	CABO	1	5,0	28	122	3416
		2	10,0	12	147	1764
P54	CABO	1	5,0	28	122	3416
		2	10,0	12	147	1764
P55	CABO	1	5,0	28	122	3416
		2	10,0	12	147	1764
P56	CABO	1	5,0	28	122	3416
		2	10,0	12	147	1764
P57	CABO	1	5,0	28	122	3416
		2	10,0	12	147	1764
P58	CABO	1	5,0	28	122	3416
		2	10,0	12	147	1764
P59	CABO	1	5,0	28	122	3416
		2	10,0	12	147	1764
P60	CABO	1	5,0	28	122	3416
		2	10,0	12	147	1764
P61	CABO	1	5,0	28	122	3416
		2	10,0	12	147	1764
P62	CABO	1	5,0	28	122	3416
		2	10,0	12	147	1764
P63	CABO	1	5,0	28	122	3416
		2	10,0	12	147	1764
P64	CABO	1	5,0	28	122	3416
		2	10,0	12	147	1764
P65	CABO	1	5,0	28	122	3416
		2	10,0	12	147	1764

Resumo do aço

AÇO	DIAM (mm)	C.TOTAL (cm)	PESO = 10 % (kg)
CA50	10,0	1025	99,1
CA60	12,5	23,1	24,4
CA80	5,0	882,9	142,6
PESO TOTAL			266,1

CA50: Volume de concreto (C=25) = 8,08 m³
CA60: Área de forma = 100,5 m²



RESUMO DO PROJETO

00	26/11/2021	EMIÇÃO INICIAL	L.TRINDADE
REV. No	DATA	DESCRIÇÃO	APROVADO
RESPONSÁVEL TÉCNICO: VINÍCIUS DONO ENG. CIVIL - CREA 596.978.882-9			CLIENTE: UNIRV - UNIVERSIDADE DE RIO VERDE
LOCAL: RIO VERDE - GO			OBJETO: MURO DE ARRIMO - DEPARTAMENTO DE LOGÍSTICA E PATRIMÔNIO UNIRV
TÍTULO: DETALHE ARMADAÇÃO DOS PILARES-FOLHA 02			ÁREA TÉCNICA: PROJETO ESTRUTURAL
ESCALA	UNIDADE	DESENHO	FOLHA
INDICADA	CM	013-EST-PIL-PIL-2-R00	013 / 00